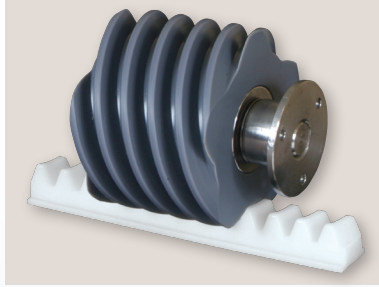


## IL500 Sierra Incline Platform Lift



### Safety and Security

Sensors on the platform ramps, drive chassis and under platform safety pan stop the lift immediately if an obstruction is encountered



### Unique Drive System

Requires no greases or lubricants. Extremely energy efficient.



Wireless Call Send Controls

### Features

- For use in residential applications
- Outdoor package available
- Mounts to the stairs not the wall!
- Only 12" from the wall when folded
- Innovative design is based on the proven SL600 Pinnacle Stair Lift drive system and utilizes the same track
- Auto-folding ramps on both ends of the platform
- Wall mounted guide rail doubles as a convenient hand rail

### Sierra Incline Platform Lift Specifications

<b>Rated Load</b>	500 lbs
<b>Drive</b>	Rack and worm gear / 24 VDC 1/8 hp motor with brake
<b>Power Supply</b>	115 VAC 15 amp grounded circuit
<b>Control Circuit</b>	24 VDC
<b>Platform</b>	25" x 36" Manual fold Power folding ramps for entry and exit
<b>Travel</b>	40 feet maximum
<b>Speed</b>	14 feet per minute

<b>Controls</b>	Constant pressure rocker switch on platform Radio frequency wireless remote fobs
<b>Manual Lowering</b>	Device provided
<b>Safety Design Standards</b>	ASME A18.1, Section 6 - Incline Platform Lifts
<b>Safety Features</b>	Overspeed governor Upper and lower landing limits Upper and lower final limit Ramp obstruction sensors Under platform safety pan obstruction sensors Drive chassis obstruction sensors Non-skid surface